

Kitchen waste



What can you recycle and what should you bin?

Please recycle as much waste as you can. We have provided a range of bins to take different kinds of waste so anything that can't be recycled can go in one of these.

Recycle

Please place plastics, tins and paper into the clear recycling bags. **No food packaging or plastic bags please.**



Glass

Use the outside bottle banks near your hall – whole jars and bottles only please.



Broken glass

Dispose of broken glass in the 'sharps' bin in your kitchen.



Food waste

Place food waste in the special bins provided.



General waste

Please place everything else in the black bags in the dustbin – crisp packets, food cartons and takeaway packaging. Everything that can't be recycled.



**Thanks,
and well done!**

Northcourt Group Halls Wardens, staff and Hall mentors



General Manager
Catherine Mewes



Sherfield Hall Warden
Matt Daley



Sherfield Hall Mentor
Anamariji Veic



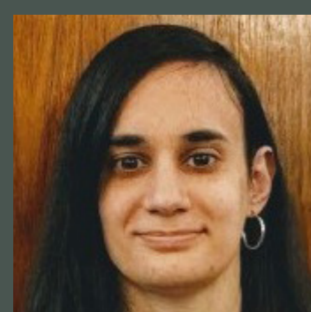
St Patricks Hall Mentor (including Creighton Court and Northcourt Houses)
Ellie Goddard



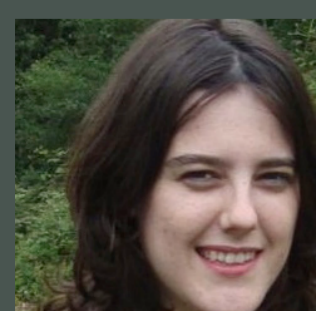
Deputy General Manager
Paul Ludlow



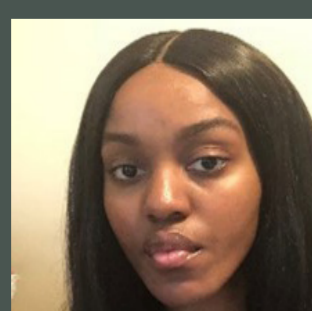
St Patrick's Hall Warden
Emmanuel Essah



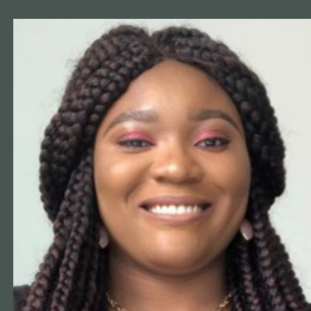
Benyon Hall Mentor
Florencia Botta



Benyon Hall Warden
Carrie-Anne Twitchen



Sherfield Hall Mentor
Chi Chi Okagbue



Benyon Hall Mentor
Ugochi Peace Nwosu



St Patricks Hall Mentor (including Creighton Court and Northcourt Houses)
Yi Hu

Buzz off!

Top tips for avoiding bugs and pests:

- Keep your room and kitchen clean! (remember to regularly vacuum your room)
- Don't store food in your bedroom!
- Keep your room well ventilated by opening windows regularly, but remember to close them at night!

Call the Halls Hotline if you see one of these!



Mice and rats Mice won't harm you but rats can spread disease.

Cockroaches Cockroaches are attracted to food waste and poor housekeeping.

Pharaoh ants Pharaoh ants are smaller than common garden ants, and a light brown colour.

Call the Halls Hotline if you see a lot of these!



Silverfish Silverfish are small silver insects that are harmless to humans. They are attracted to damp or humid conditions and food waste. If you see a number of these on a regular basis then call the Halls Hotline.

Ants The most common types of ant are black garden ants and these are usually completely harmless. These should only be reported if there are large numbers.

Nothing to worry about, only give us a call if you see a lot!



Wasps and bees These are most active in the warm summer months. They are attracted to sugar so watch them around your drinks! They can sting if provoked but this is not generally not very painful. If you have one in your flat the best thing to do is open the window to allow it to fly out!

Ladybirds and flies These are both completely harmless and won't hurt you so no need to panic! Only call the Halls Hotline if you see a lot of these at one time.

If you have any concerns about bugs or pests then please call the **Halls Hotline** on **0800 029 1984**. You can find out more about common UK pests at **www.bpca.org.uk**

Kitchen waste



What can you recycle and what should you bin?

Please recycle as much waste as you can. We have provided a range of bins to take different kinds of waste so anything that can't be recycled can go in one of these.

Recycle

Please place plastics, tins and paper into the clear recycling bags. **No food packaging or plastic bags please.**



Glass

Use the outside bottle banks near your hall – whole jars and bottles only please.



Broken glass

Dispose of broken glass in the 'sharps' bin in your kitchen.



Food waste

Place food waste in the special bins provided.



General waste

Please place everything else in the black bags in the dustbin – crisp packets, food cartons and takeaway packaging. Everything that can't be recycled.



**Thanks,
and well done!**

Redlands Group Halls Wardens, staff and Hall mentors



General Manager
Catherine Mewes



Bridges Hall Warden
Dr Sam Boateng



**Wantage and
St George's Hall
Mentor**
Yara Chamata



**Bridges and
Wessex Hall
Mentor (including
Townhouses)**
Laura Reeves



**Assistant General
Manager**
Martyn Stratton



**St George's and
Wantage Halls
Warden**
Melina Aston



**Wantage and
St George's Hall
Mentor**
Sam Lawal



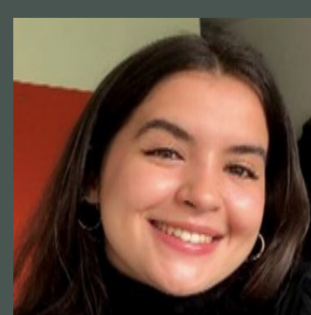
**Bridges and
Wessex Hall
Mentor (including
Townhouses)**
Anika Salim



**Deputy General
Manager**
Loraine Whittam



**Wessex Hall
and Bridges
Townhouses
Warden**
Dr Tim Lees



**Wantage and
St George's Hall
Mentor**
Kaouthar Alaoui



**Bridges and
Wessex Hall
Mentor (including
Townhouses)**
Luki Guo

Buzz off!

Top tips for avoiding bugs and pests:

- Keep your room and kitchen clean!
(remember to regularly vacuum your room)
- Don't store food in your bedroom!
- Keep your room well ventilated by opening windows regularly, but remember to close them at night!

Call the Halls Hotline if you see one of these!



Mice and rats Mice won't harm you but rats can spread disease.

Cockroaches Cockroaches are attracted to food waste and poor housekeeping.

Pharaoh ants Pharaoh ants are smaller than common garden ants, and a light brown colour.

Call the Halls Hotline if you see a lot of these!



Silverfish Silverfish are small silver insects that are harmless to humans. They are attracted to damp or humid conditions and food waste. If you see a number of these on a regular basis then call the Halls Hotline.

Ants The most common types of ant are black garden ants and these are usually completely harmless. These should only be reported if there are large numbers.

Nothing to worry about, only give us a call if you see a lot!



Wasps and bees These are most active in the warm summer months. They are attracted to sugar so watch them around your drinks! They can sting if provoked but this is not generally not very painful. If you have one in your flat the best thing to do is open the window to allow it to fly out!

Ladybirds and flies These are both completely harmless and won't hurt you so no need to panic! Only call the Halls Hotline if you see a lot of these at one time.

If you have any concerns about bugs or pests then please call the **Halls Hotline** on **0800 029 1984**. You can find out more about common UK pests at **www.bPCA.org.uk**

Kitchen waste



What can you recycle and what should you bin?

Please recycle as much waste as you can. We have provided a range of bins to take different kinds of waste so anything that can't be recycled can go in one of these.

Recycle

Please place plastics, tins and paper into the clear recycling bags. **No food packaging or plastic bags please.**



Glass

Use the outside bottle banks near your hall – whole jars and bottles only please.



Broken glass

Dispose of broken glass in the 'sharps' bin in your kitchen.



Food waste

Place food waste in the special bins provided.



General waste

Please place everything else in the black bags in the dustbin – crisp packets, food cartons and takeaway packaging. Everything that can't be recycled.



**Thanks,
and well done!**

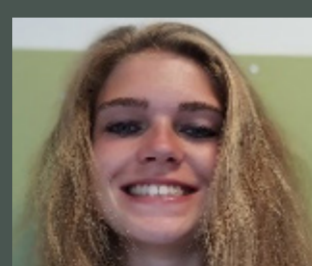
Park Group Halls Wardens, staff and Hall mentors



General Manager
Justin Milward



Childs Hall Warden
Dr Mike Proven



Stenton Hall Mentor
(inc. Lambourne Townhouse)
Sophie Read



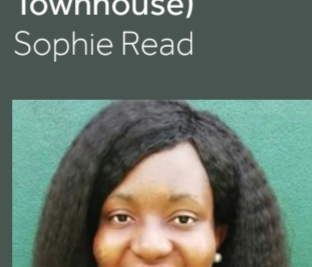
Dunsden Crescent and Mackinder Hall Mentor
Godswill King



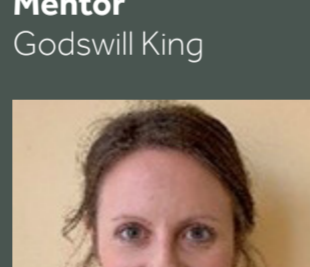
Deputy General Manager
Steve Thomas



Stenton Hall and Lambourne Townhouses Warden
Andrew Happle



Childs Hall Mentor
Claudia Aguguo



Windsor Hall
(inc. Newington and Oakley Townhouses and Greenow & McCombie)
Carly Kempster



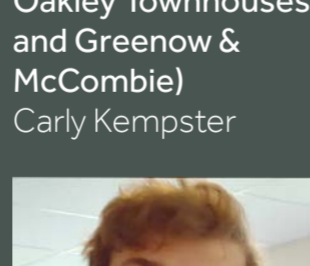
Windsor Main, Greenow & McCombie and Oakley and Newington Townhouses Warden
Professor Keshavan Niranjan



Dunsden Crescent and Mackinder Hall Warden
Dr Sakthivel Vaiyapuri



Childs Hall Mentor
Ting Fang Yeh (Grace)



Windsor Hall
(inc. Newington and Oakley Townhouses and Greenow & McCombie)
Oliver Back



Dunsden Crescent and Mackinder Hall Mentor
Nikoleta Vavouraki



Stenton Hall Mentor
Kimberley Perry

Buzz off!

Top tips for avoiding bugs and pests:

- Keep your room and kitchen clean! (remember to regularly vacuum your room)
- Don't store food in your bedroom!
- Keep your room well ventilated by opening windows regularly, but remember to close them at night!

Call the Halls Hotline if you see one of these!



Mice and rats Mice won't harm you but rats can spread disease.

Cockroaches Cockroaches are attracted to food waste and poor housekeeping.

Pharaoh ants Pharaoh ants are smaller than common garden ants, and a light brown colour.

Call the Halls Hotline if you see a lot of these!



Silverfish Silverfish are small silver insects that are harmless to humans. They are attracted to damp or humid conditions and food waste. If you see a number of these on a regular basis then call the Halls Hotline.

Ants The most common types of ant are black garden ants and these are usually completely harmless. These should only be reported if there are large numbers.

Nothing to worry about, only give us a call if you see a lot!



Wasps and bees These are most active in the warm summer months. They are attracted to sugar so watch them around your drinks! They can sting if provoked but this is not generally not very painful. If you have one in your flat the best thing to do is open the window to allow it to fly out!

Ladybirds and flies These are both completely harmless and won't hurt you so no need to panic! Only call the Halls Hotline if you see a lot of these at one time.

If you have any concerns about bugs or pests then please call the **Halls Hotline** on **0800 029 1984**. You can find out more about common UK pests at **www.bpca.org.uk**